

MFA - JIB

"More reach" is probably the most requested customer requirement that reaches us. We are doing our best with the new MFA-Jib to expand your application possibilities.

The main advantages of the PJM020 are more than 5 meters of additional reach and the ability to get over additional interference edges. If you equip the MFA-Jib with an own MFA at the top and a pulley head, it is possible to work in winch operation mode.

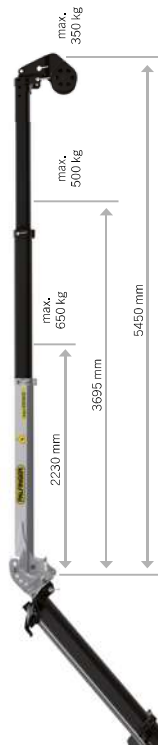
The MFA-JIB is an interchangeable load handling device and complies with EN 13155. It can be easily and conveniently retrofitted and integrated into the electronic stability system of the crane with the new software function "TOOL".

PJM020

TECHNICAL DATA

PJM020

Lifting moment	[mt]	1,84
Max. reach	[m]	5,25
Max. load	[kg]	650
Painting		RAL 7001
Weight	[kg]	100



OPTIONS

OPTIONS / DESCRIPTION

- S2.5-MFA** prepared for winch operation 2.5 t incl. MFA load attachment 11,5 t
- S3.5-MFA** prepared for winch operation 3.5 t incl. MFA load attachment 11,5 t
- S4.5-MFA** prepared for winch operation 4.5 t incl. MFA load attachment 11,5 t



ADJ manual angle adjustment
-20° / 0° / +20° / +40° / +60°

The optionally available angle adjustment device makes it possible to overcome interference edges for special operations.



KMG07490A „Parking console for easy, space-saving and secure storage of the MFA-JIB, above the crane base mounted crane tank. For the cranes PK135,002 TEC / PK165,002 TEC“

