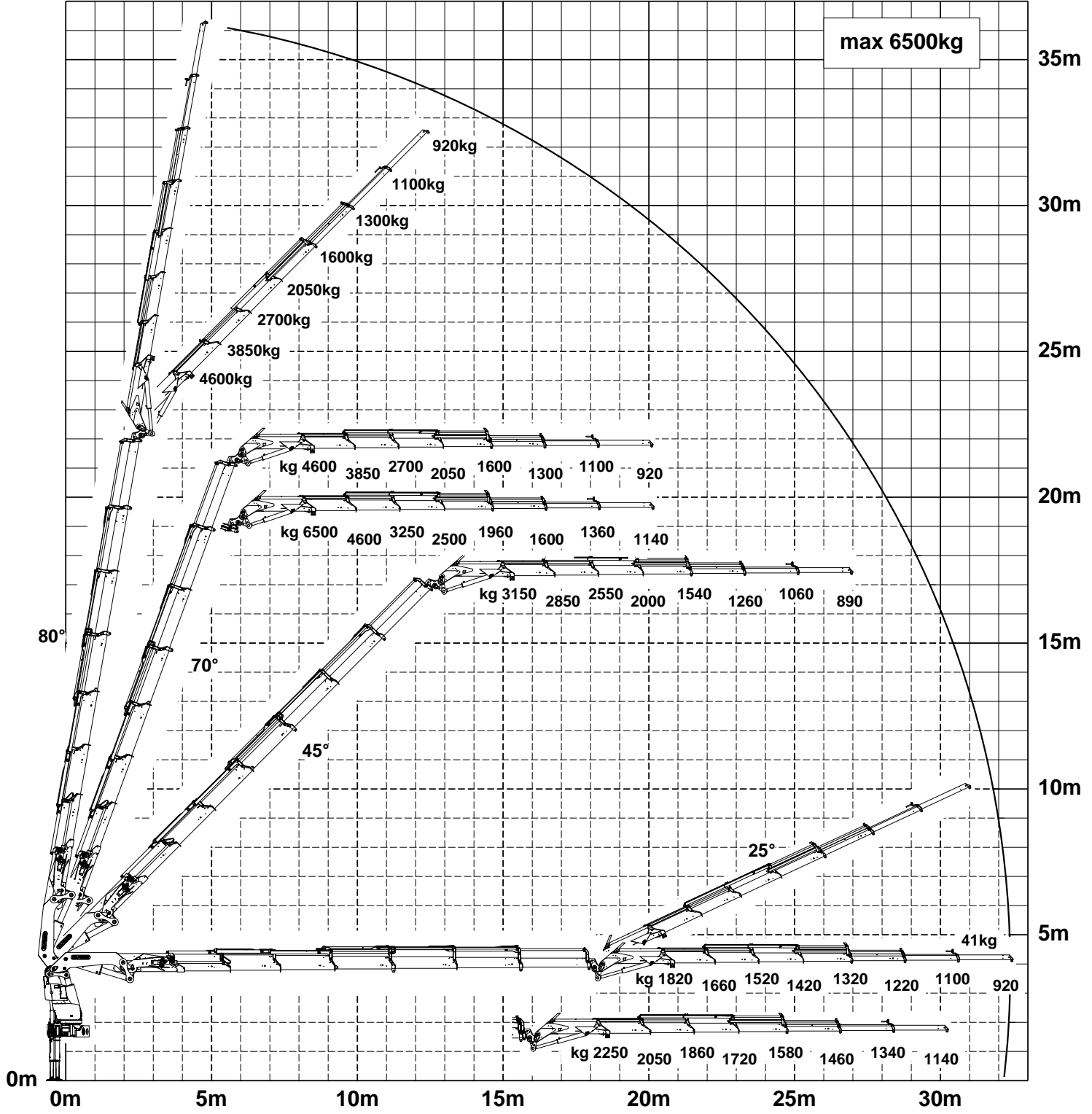


Lifting capacity diagram PK 92002-SH F PJ170 EJV1 DPS+

Subject to change, production tolerances have to be taken into account.

DPS plus
Dual Power System



When using mechanical boom extensions, the loads shown on the charts need to be reduced by the weight of these extensions.
Symbolic crane figure, indications at 20° main boom position & load arm in horizontal position



For Rope winch load capacity refer to page
Page 020.31100 2.5t Page 020.32100 3.5t